

IAASE

23RD ANNUAL FALL CONFERENCE

OCTOBER 20-21, 2022

TINLEY PARK CONVENTION CENTER
TINLEY PARK, IL

FORWARD TOGETHER

KEYNOTE SPEAKERS

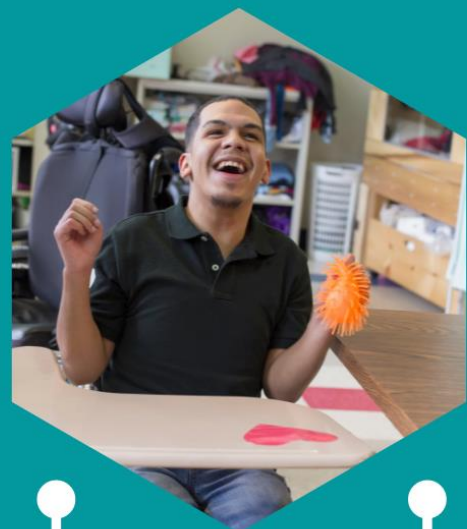
*CHRIS SINGLETON
JULIANA URTUBEY*

ADMINISTRATOR ACADEMY

*LEADING POSITIVE SCHOOL CULTURE:
PRIORITIZING SELF-CARE, STAFF
WELLNESS AND COMPASSION
RESILIENCE, AA3828*

PROFESSIONAL DEVELOPMENT

*OVER 35 HOURS OF PROFESSIONAL
DEVELOPMENT ON HOT TOPICS IN
SPECIAL EDUCATION
ILLINOIS ATTORNEY PANEL*





*Providing the Voice, Vision,
and Future of
Special Education Leadership
in Illinois*

The Illinois Alliance of Administrators of Special Education

Affiliated with the Council of Administrators of Special Education (CASE)

Dear Colleagues,



I am so excited to welcome you to the Illinois Alliance of Administrators of Special Education (IAASE) as we begin our 24th year as a professional organization in the State of Illinois. The IAASE is the largest CASE unit in the country and the largest statewide organization of special education administrators. In the past few years we have surpassed 1300 members from all regions of the state. It is our mission to provide the voice, vision and future of special education leadership in Illinois through progressive leadership to members and impactful advocacy for students and families. We are regularly called upon by the legislature, our colleagues, government officials, and others for expert testimony, guidance and information about working with students with disabilities. IAASE is able to do this great work because of your involvement.

There are several membership opportunities available, please choose the best option for you. You can become a unified member of CASE, CEC, and IAASE for just \$450.

The following membership categories are within IAASE:

- Professional Membership (for those administrators or college faculty currently practicing in the field) - \$180/year
- School Law Associate Membership (for our colleagues in the field of school law) - \$180/year
- Business Associate Membership (for individuals who don't fit neatly into the categories above who might be promoting a product or service) - \$180/year
- Retiree Membership (for individuals who were once an IAASE Professional Member, but are now either retired or working part time in the field) - \$50/year
- Aspiring Administrators (for individuals not in an administrative role or who are in a graduate program seeking a supervisory endorsement) - \$50/year

The last few years have been difficult ones for our field. I urge you to look at IAASE to help ground your work, provide professional development, and help you to connect with your colleagues around the state. We are truly stronger when we support and learn from one another. I have found in IAASE a group of professionals who share my values about educating students and building up adults; we need this type of uplifting group in these times. If IAASE can be of service or assistance to you, please don't hesitate to reach out.

Take care!

Elizabeth

Elizabeth deGruy, Ed.D.
IAASE President

E-mail: degruy.elizabeth@ccsd59.org

Illinois Alliance of Administrators of Special Education 23rd Annual Fall Conference

Forward Together

GENERAL CONFERENCE INFORMATION

This conference features timely topics of interest to IAASE members, special education directors and supervisors, and regular education administrators.

Dates and Times:

October 19, 2022 – Pre-Conference Workshops (Wednesday)
Registration begins at 8:00 a.m. Pre-conference workshops are from 8:30 a.m. to 3:30 p.m.

October 20-21, 2022 – Fall Conference (Thursday & Friday)
Conference registration and continental breakfast begin at 7:30 a.m. each day. Conference presentations begin promptly at 8:30 a.m. each day.

Conference Location:

EVEN Hotel & Tinley Park Convention Center

18451 Convention Center Drive
Tinley Park, Illinois 60477
(708) 444-1100

EVEN Hotel Chicago-Tinley Park (Newly Remodeled was previously Holiday Inn Reservations:

Rate: \$139 per night plus tax (Single or Double)

Phone: (708) 444-1100 Block Code: IAA

Hotel reservations must be made by September 27, 2022, to get the special IAASE Fall Conference rate (based on availability). After this cut-off date, rooms will be subject to the current hotel rate

Pre-Conference Workshop Registration Fee:

\$150 per Person for registrations on or before October 6

\$250 Per Person for registrations after October 6

Online Registration closes on October 13, 2022

(Administrators' Academy Credit Available)

Register early as the seating space for the pre-conference workshops is limited. The registration fee includes administrators' academy credit fee, continental breakfast, working lunch and materials.

(The pre-conference registration fee is not included in the IAASE Fall Conference registration fee.)

Early-Bird Fall Conference Fees for Registrations

Received on or before October 6, 2022

\$325 – FY23 IAASE Members Only

\$450 – Non-Members

\$150 – FY23 IAASE Student Members (Enrolled in a graduate program leading to Administrative or Supervisory endorsement but not currently in an administrative role - Documentation required)

\$150 – FY23 IAASE Retired Members

After October 6, 2022, the registration fee for each category increases \$100

The registration deadline is October 13, 2022

Remember to register early!! The registration fee includes official programmed events, continental breakfasts, luncheon on Thursday, social hour reception on Thursday evening, registration gift, and access to Guidebook, the 2022 Fall Conference App.

Dress for the IAASE Fall Conference is casual.

Membership enrollment and conference registration is available online. The online registration process will allow you to pay by credit card, check, or purchase order and you will receive an email confirmation! Simply visit www.iaase.org to access the online registration!

Please make the check payable to **IAASE** and mail to:

IAASE FALL CONFERENCE

P. O. 1733

Granite City, IL 62040

Contact Person: Lydia Sipes (618) 512-1414

Email: lsipes@iaase.org

Fax: (618) 931-0463

Special Assistance:

The EVEN Hotel and Conference Center in Tinley Park is a fully accessible site. Please identify any special needs on your registration form.

Conference Cancellation Policy:

A \$25 cancellation fee will be retained by IAASE for conference cancellations by individuals which occur on or before October 13, 2022. No refunds will be given for cancellations that occur after October 13, 2022. Registrations received but not cancelled will still be subject to the conference fee.

Administrators' Academy Credit, Administrators' Recertification Professional Development Activity Hours, and CPDU Credit for Teacher Certification:

Administrators' Academy Credit is available for attendees at the pre-conference workshop: **"Leading Positive School Culture: Prioritizing Self-Care, Staff Wellness and Compassion Resilience, AA#3828** on Wednesday, October 19, 2022

The pre-conference workshops and the IAASE 23rd Annual Fall Conference could serve as possible professional development activities for the required hours for administrators' recertification.

Continuing Professional Development Units (CPDUs) for the teacher certification process will be available at the Fall Conference.

Annual IAASE Membership:

IAASE Membership Dues are renewable each July 1st. Paid membership prior to or in conjunction with the conference entitles registrants to take advantage of the reduced conference rates for IAASE members. The Membership application is available at www.iaase.org.

\$180 Professional Membership

\$180 School Law Associate Membership

\$180 Business Associate Membership

\$ 50 Student Membership (*Documentation Required*)

\$ 50 Retired Membership (*For individuals who previously were IAASE members who have retired from full-time work*)

For Conference Information Contact:

Norma Gerrish

IAASE Administrative Assistant

Phone: (618) 622-8800

Email: ngerrish@iaase.org

Tarin Kendrick

IAASE Program Chair

Phone (847) 965-9040

Email: tkendrick@ntdse.org



EVEN Hotel Chicago-Tinley Park and Conference Center
18451 Convention Center Drive – Tinley Park, IL 60477
Phone: (708) 444-1100 Fax: (708) 444-1104

Illinois Alliance of Administrators of Special Education 23rd Annual Fall Conference

Forward Together

October 19-21, 2022 (Wednesday, Thursday, and Friday)

EVEN Hotel & Tinley Park Convention Center – 18451 Convention Center Drive – Tinley Park, IL

AGENDA

Wednesday – October 19, 2022

8:00 a.m. – 8:30 a.m.	Pre-Conference Workshop Registration and Continental Breakfast
8:30 a.m. – 3:30 p.m.	Pre-Conference Workshop Presented by Dr. Sonya Spaulding and Demian LaPointe <i>“LEADING POSITIVE SCHOOL CULTURE: PRIORITIZING SELF-CARE, STAFF WELLNESS AND COMPASSION RESILIENCE,” AA#3828</i>
10:00 a.m. – 2:30 p.m.	IAASE Executive Board Meeting – Tinley Park Conference Center All IAASE Members are Welcome
3:00 p.m. – 4:30 p.m.	Conference Registration (Lower Lobby)

Thursday – October 20, 2022

7:30 a.m. – 8:30 a.m.	Registration and Continental Breakfast
8:00 a.m. – 5:00 p.m.	Exhibit Area Open
8:15 a.m. – 8:25 a.m. (Prompt Start)	Welcome and Announcements – General Session Dr. Elizabeth deGruy, IAASE President
8:25 a.m. – 9:05 a.m.	Office of Special Education Programs, US Department of Education Valerie Williams, Director
9:05 a.m. 10:05 a.m.	General Session I – Keynote: Chris Singleton <i>“UNITY IN OUR COMMUNITIES (LOVE > HATE)”</i>
10:05 a.m. – 10:20 a.m.	Break
10:20 a.m. – 11:20 a.m.	Concurrent Sessions
11:20 a.m. – 11:30 a.m.	Break
11:30 a.m. – 12:30 p.m.	Concurrent Sessions
12:30 p.m. – 1:30 p.m.	Luncheon
1:30 p.m. – 1:45 p.m.	Transition/Break/Visit Vendors
1:45 p.m. – 2:15 p.m.	Regional Meetings
2:15 p.m. – 2:30 p.m.	Break
2:30 p.m. – 3:30 p.m.	Concurrent Session
3:30 p.m. – 3:45 p.m.	Break
3:45 p.m. – 4:45 p.m.	Concurrent Sessions
5:00 p.m. – 6:30 p.m.	“Social Hour”

Friday – October 21, 2022

7:30 a.m. – 8:30 a.m.	Registration and Continental Breakfast
8:30 a.m. – 8:40 a.m. (Prompt Start)	Welcome and Announcements Tarin Kendrick – IAASE President-Elect
8:40 a.m. – 8:50 a.m.	Christi Flores Volunteer Spirit Award: General Session Jami Hodge, IAASE Past-President
8:50 a.m. – 9:00 a.m.	Message from the IAASE Executive Director Melissa Taylor
9:00 a.m. -10:00 a.m.	General Session II – Keynote: Juliana Urtubey, 2021 National Teacher of the Year <i>“CULTIVATING A JOYOUS AND JUST EDUCATION FOR ALL”</i>
10:00 a.m. – 10:15 a.m.	Coffee Break
10:15 a.m. – 12:15 p.m.	General Session III – Legal Session: “Monday Morning Madness” with attorneys Darcy Kriha, Teri Engler, Caroline Roselli, and Brandon Wright

**The Illinois Alliance of Administrators of Special Education
and
The Illinois Special Education Leadership Academy
in cooperation with the
West40 ISC #2
invite special education and regular education administrators
to attend a pre-conference workshop...**

**“Leading Positive School Culture:
Prioritizing Self-Care, Staff Wellness
and Compassion Resilience”
Administrator Academy #3828**

**Presented by
Dr. Sonya Spaulding and Demian LaPointe**

WEDNESDAY, OCTOBER 19, 2022

**Registration: 8:00 a.m. to 8:30 a.m. ♦ Workshop: 8:30 a.m. to 3:30 p.m.
Tinley Park Conference Center, 18501 South Harlem Avenue, Tinley Park, IL**

**\$150 per Person – Includes Administrators’ Academy Credit Fee,
Continental Breakfast, Working Lunch, and Materials**

(The pre-conference workshop fee is NOT included in the IAASE Fall Conference registration fee.)

**Administrators’ Academy Credit and PD Credit
are available for this workshop.**

The purpose of the AA is for participants to:

- **Describe** a culture of staff wellness and its impact on education
- **Evaluate** their current professional quality of life (participants examine 4 different research-based surveys that they then consider using in their local districts/schools with staff members)
- **Assess** and embed components of compassion resilience within their own self-care plan (participants explore the balance of Compassion Fatigue and Compassion Satisfaction)
- **Conceptualize** how MTSS provides a framework for a culture of staff wellness
- **Create** a plan for engaging school teams to promote and prioritize staff wellness within their MTSS framework

Register early as this workshop is limited to 100 participants

IAASE FALL CONFERENCE TOPICS, PRESENTERS, and STRANDS

- ✓ **A Framework for Responding to Methodology Requests (ADMINISTRATION)**
By Cassie Black and Anne Bowers
- ✓ **Who Knew a Cruise Ship Could Turn Around in a Small Pond? (ADMINISTRATION)**
By Cindy Keller Ward and Meri Havenar
- ✓ **IL State Plan Amendment (SPA) Update: Medicaid Cost Settlement Process & Service Documentation for All Students (ADMINISTRATION)**
By Kimberly Moore and Tom Osborn
- ✓ **Accommodations for English Learners for State Assessments (ASSESSMENT: ELL)**
By Barry Pedersen
- ✓ **Assessments for the Special Education Population (ASSESSMENT)**
By Pam Hartwig and Laura Quimby
- ✓ **Trouble-free Transitions: 5 Effective and Easy Strategies to Use Today (AUTISM)**
By Laura Brown
- ✓ **Refine and Retain: Setting up the Next Generation of Special Educators for Success! (AUTISM)**
By Rose DeCanniere
- ✓ **Researched-Based Positive Behavioral Strategies for Reducing the Use of Physical Restraint and Time Out (BEHAVIOR MANAGEMENT)**
By Kristine Jones
- ✓ **7 Research Based Strategies that are Effective in Changing Behavior in the Classroom (BEHAVIOR MANAGEMENT)**
By Lani Lawson
- ✓ **Collaborating With School and Outside Supports to Meet Student's Behavioral and Academic Needs (BEHAVIOR MANAGEMENT)**
By Dr. Kelly Olsen and Elise Brown
- ✓ **RTO Compliant Process (BEHAVIOR MANAGEMENT)**
By Erin Saxton, Kim Barnes-Cummins, Laura Haslam, and Katrina Cunningham
- ✓ **"Wait... what? He didn't teach us that!" Applying Cognitive Load Theory: A Framework for Driving IEP Accommodations and Maximizing Student Learning (CURRICULUM)**
By Antonia Galan and Emily Hanlon
- ✓ **Parental Voice and Involvement in Education: Possibilities of Transformation (DIVERSITY EQUITY INCLUSION -DEI)**
By Dr. Karen Anderson
- ✓ **Integrating Special Education into Preschool Classrooms: Practical Strategies to Support Early Childhood Professionals in Implementation (E.C.)**
By Kristy Doan, Kathy Slattery, and Ann Kremer
- ✓ **How To Build Inclusive Practices in Your District That Matter (INCLUSIVE PRACTICES)**
By Monica Berg, Elizabeth deGruy, Vicki Domnanovich, and Ellen Krcik
- ✓ **It's My Plan, Give me a Voice! Teaching Elementary Students how to be an Active Member of their IEP Team (INNOVATIVE PRACTICES)**
By Anne Clark, Kathleen Enright, and Kelly Mack
- ✓ **Sensory Regulation and Academic Achievement - A Research-Based Approach for Body-Brain Integration and Effective use of Technology for All Classrooms (INNOVATIVE PRACTICES)**
By Bridgette Nicholson
- ✓ **Bringing Present Levels to LIFE (INNOVATIVE PRACTICES)**
By Colleen Ward and Amy Grmusich
- ✓ **Discipline or Punishment? The Powerful Impact of Building a Relational School Community (LEADERSHIP)**
By Dr. Matt Epperley
- ✓ **Change is a Collaborative Process (LEADERSHIP)**
By Dr. Melissa Kaczkowski, Laurel O'Brien, Dr. Judith Hackett, and Dr. Timothy Thomas
- ✓ **Back in Action (LEADERSHIP)**
By Lani Lawson
- ✓ **Isolated Time Out, Time Out, and Physical Restraint: Where We've Been and Where We Are (LEGAL)**
By Kaitlin Atlas and Jennifer Smith
- ✓ **It's Time to Redouble Your Efforts! The IDEA's Requirements and ED's Guidance on the Discipline of Students with Disabilities and Ensuring Nondiscriminatory Practices (LEGAL)**
By Cynthia Baasten and Luis Rodriguez
- ✓ **We Have to Talk: How to Discuss Difficult and Disturbing Behaviors with Parents (LEGAL)**
By Dana Fattore Crumley and Micki Moran
- ✓ **Understanding Prior Written Notice: Documentation and Communication is Key! (LEGAL)**
By Aimee R. LeBlanc and Kristen R. Kinast
- ✓ **Disciplining Students with Disabilities: State and Federal Guidance (LEGAL)**
By Courtney Stillman
- ✓ **Dissecting Dyslexia Disputes: A Review of Trends in Reading Litigation (LEGAL)**
By Courtney Stillman
- ✓ **Accommodating Students with Disabilities in Non-Academic School Settings (LEGAL)**
By Zaria N. Udeh and Michelle L. Weber
- ✓ **Where are we Headed with Title IX and Students with Disabilities? (LEGAL)**
By Brandon K. Wright
- ✓ **Updates on the Illinois SPA and Program Expansion (MEDICAID REIMBURSEMENT)**
By Peter Gilles
- ✓ **Supporting Young Children with Selective Mutism in Schools (MENTAL HEALTH)**
By Kathy Slattery
- ✓ **Managing Student Safety: From Threat Assessments to Clear and Present Danger (MENTAL HEALTH/LEGAL)**
By Michelle A. Todd, Jessica T. Nguyen, and Dr. Lea Anne Frost
- ✓ **School Attendance and Chronic Absenteeism (STUDENT ATTENDANCE)**
By Jamie Benavides, Josh Axelsen, and Anne Scalia
- ✓ **Evidence-Based Funding and Special Education – The Basics of Funding and Planning for EBF Dollars (STATE FUNDING AND THE REQUIRED EBF SPENDING PLAN)**
By Luke Corry
- ✓ **Guiding Teams through the Assistive Technology Decision-Making Process: What Every Administrator Needs to Know (TECHNOLOGY)**
By Samantha Conklin and Jennifer Skalitzky
- ✓ **Legal Planning for Educators and Administrators (TRANSITION)**
By Jennifer Sabourin and Katie Clancy

Step-by-Step Directions for Online Membership Registration

Membership enrollment and conference registration is available online. The online registration process will allow you to pay by credit card, check, or purchase order and you will receive an email confirmation!

1. To begin the online registration process, go to www.iaase.org
2. Click on the words "Online Membership, Workshop, and Conference Registration" This link is located near the upper right margin.
(Note: do not click on the blue tab that says: "Member Porta." This is the member benefit link you will use to access information that is only available to 2022-2023 paid members. Once you have completed your FY23 membership application you will receive an email with the username and password to access information on this link)
3. You will see an informational paragraph about online registration. Once you have read it, click on the words "**click here**"
4. You will be taken to a page that has multiple registration links. **Remember, by paying your IAASE membership first, you become eligible for the discounted conference registration fees!**
5. You will then be connected to a page that describes the option you have chosen to register for. If this is correct, click on the words near the bottom of the message that says "**Register Now...**"
6. ARE YOU NEW TO IAASE? If you were not an IAASE member after the 2011-2012 year and did not attend a conference or workshop you will need to create a new account. Click on the red words "**Click Here to Create a New Account.**" You will then be taken to a blank information form that you will need to complete and submit. If you are creating a new password, it must be 8 characters long and contain at least one numeral.
7. RETURNING IAASE MEMBERS: If you were an IAASE member or attended any of the conferences since the fall of 2011 you already have an account with your own specific username and password. Your username will always be your email address. If you do not remember what your registration password has been you can click on the words: "**Click Here for Lost Password**" and your password will be emailed to you. If you remember your password, you can fill in the blanks and click to login. This will take you to a page that tells you if you are eligible to renew your membership or if it has already been renewed. If eligible, click on the words "Click to Register." **IMPORTANT: This is where you have the opportunity to revise any information that may have changed. Please check it carefully and make any appropriate revisions.**
8. If you are not certain about which region you work in, click on the words {View Details} where you will see the counties that are included in each of the separate regions.
9. Once you have completed the form and made any appropriate revisions click "**Submit Membership**" at the bottom of the page
10. You will be given the option at this point to register another individual for the same event, see a list of events to register for another event, or click to complete the registration and proceed to the checkout.
11. When you decide to checkout you will be given several payment options. You can enter your credit card information or select the option to pay by check or purchase order.
12. Once you complete the checkout you will receive a confirmation message that your membership application has been processed. This message will also include the IAASE member username and password to access the members' portion of the website.
13. If you have selected the option to pay by check, please print your confirmation message and submit it, along with your payment to: IAASE, P.O. Box 1733, Granite City, IL 62040. If you are paying by purchase order, please email a copy of the PO to lsipes@iaase.org or fax a copy to 618-931-0463 being sure to include the name of the member on the PO

Please contact Lydia Sipes lsipes@iaase.org Phone: 618-512-1414 or Norma Gerrish ngerrish@iaase.org Phone: 618-622-8800 if you have any questions or problems.

Step-by-Step Directions for Online Conference and Workshop Registrations

IMPORTANT: Remember, by paying your IAASE membership first, (see above) you become eligible for the discounted conference registration fees!

If you are registering your membership and registering for an event at the same time you can continue from step #10 above.

If you are not registering your membership, and have not been an IAASE member, you will need to begin with step #1 above and proceed to step 6 (NOTE: There are no membership discounts for pre-conference workshop registrations, and you do not need to be a member to attend a pre-conference workshop.) Complete the form and submit. This will take you to step 10 above

- You will be given the option at this point to register another individual for the same event, see a list of events to register for another event, or click to complete the registration and proceed to the checkout.
- When you decide to checkout you will be given several payment options. You can enter your credit card information or select the option to pay by check or purchase order.
- Once you complete the checkout you will receive a confirmation message that your registration has been processed.

Please contact Lydia Sipes lsipes@iaase.org Phone: 618-512-1414 or Norma Gerrish ngerrish@iaase.org Phone: 618-622-8800 if you have any questions or problems.

If you are already a member for FY23, if you attended an IAASE pre-conference workshop, or conference since the fall of 2011 your information will automatically appear once you have entered your email address and password. Please check the information for accuracy and make any appropriate revisions. Once you are certain the information is correct click on submit registration at the bottom of the page. This will take you to step 10 above.

- You will be given the option at this point to register another individual for the same event, see a list of events to register for another event, or click to complete the registration and proceed to the checkout.
- When you decide to checkout you will be given several payment options. You can enter your credit card information or select the option to pay by check or purchase order.
- Once you complete the checkout you will receive a confirmation message that your registration has been processed.

Please contact Lydia Sipes lsipes@iaase.org Phone: 618-512-1414 or Norma Gerrish ngerrish@iaase.org Phone: 618-622-8800 if you have any questions or problems.